



# ASCENT TECHNOCRATS

Manufacturer of Precision Machined Components



An ISO 9001:2015 Certified  
Company

Contact Us –  
ASCENT TECHNOCRATS  
W – 205 , MIDC, Ambad, Nashik-422010,  
Maharashtra, India  
Phone +91 9373673870  
E-mail :  
[akash.divate@ascenttechnocrats.com](mailto:akash.divate@ascenttechnocrats.com)  
E-mail : [ascenttechnocratsnsk@gmail.com](mailto:ascenttechnocratsnsk@gmail.com)  
Website : [www.ascenttechnocrats.com](http://www.ascenttechnocrats.com)

## WELCOME TO ASCENT TECHNOCRATS:-

ASCENT TECHNOCRATS – 25 years old manufacturing company (4000 sq. ft. area) which is located in Nashik MIDC area, India. This company is ISO 9001–2015 certified by UKAS , UK and following world class quality systems which is required for manufacturing of Precision Machined Components.

## WHO WE ARE :-

- ❖ Industry leaders in CNC machining, 3<sup>rd</sup> & 4<sup>th</sup> axis VMC machining
- ❖ Specialists in high–precision components and complex assemblies
- ❖ Trusted partners to a diverse range of industries, including aerospace, automotive, medical, and more

## KEY HIGHLIGHTS:-

- ❖ State–of–the–art facilities equipped with advanced technology
- ❖ Highly skilled team dedicated to excellence and continuous improvement
- ❖ Comprehensive quality assurance processes to meet the highest standards
- ❖ Global reach with the capacity to handle projects of any size







## OUR VISION

Ascent Technocrats vision is to establish itself as the pre-eminent global manufacturer of Precision Machined Components.

## OUR MISSION

To be a business partner with who is determined to achieve GROWTH by adopting good manufacturing and quality practices. who can provide COST effective solutions through innovations and continual improvements.



## Manufacturing Services

### ✓ Flexible Approach:-

Our flexible manufacturing approach allows us to handle batch quantities as small as 50 units, with the capability to set up high-volume production lines based on customer requests and business potential.

### ✓ Sub-Assembly Contract Manufacturing :-

Complete sub assembly consisting of many child parts can be supplied in assembled condition with performance qualification and on-time delivery.

### ✓ Global Reach and Capacity :-

With a well-established network of production facilities and logistics partners, we ensure seamless and efficient delivery of high-quality products worldwide.

### ✓ 4<sup>th</sup> Axis Machining :-

Elevate your projects with our 4-axis machining: experience unparalleled intricacy and efficiency. Master complex designs with dynamic work piece rotation across four distinct axes, ensuring unmatched precision.





# INDUSTRIAL APPLICATIONS

## 1. Fitting Parts

Stainless Steel FLANGES, Brass COUPLERS, CONNECTORS, ADAPTORS required in Gas & Water distribution compression fittings.

## 2. Engine Parts

Nipples, Mass Balancer Sleeves, Nozzles, Shoulder Bolts, Bleeder Screws, Spacers, Tubular Spacers, Distance pieces, Needles, Retainer Cap, Adjusting Screws, Leak off Screws.

## 3. Automobile Parts

Ball Joints, Studs, Nuts, Bushes, Customized Products, King Pins.

## 4. Electronic Industry

Proxy Sensor body & Body Nut.

## 5. Conveyor Industry

Ball Joints, Studs, Nuts, Bushes Customized Products, King Pins.

## 6. Switchgear Industries (Circuit Breakers)

Bi-metallic lugs, Bi-metallic clamps, angled lugs and aluminum connectors, Screws, Spacers, Shafts, Bushings, Ball Joints, Knobs, Hinges, Studs, Puffer Cylinder, etc.



# INDUSTRIAL APPLICATIONS

## 7. Automatic Teller Machines

Customized Turned Spacers.

## 8. Pumps

Wall Seats, Connectors, adaptors ,  
Pump Valve Insert/components.

## 9. Construction Equipment's / Earthmoving vehicles

Ball Joints, Studs, Nuts, Bushes,  
Customized Products, King Pins.

## 10. Pneumatic/Hydraulic Industry

Adaptors, Seat Retainers, Screws,  
Nuts, Connectors, Valve Seat, Pistons,  
Hose Fittings.

## 11. Threaded Parts

Screw Machined Parts,  
Inserts

## 12. Shock Absorber Assy.

Pistons, Special Nuts, Studs, Flat  
Nuts, Spacers etc.

## 13. Electrical Industry

Pins, D- Shafts, Spacers, Bushings,  
Sleeves, Screws, Rollers, Earthling  
Plug, Eccentric Stud, Adaptors,  
Adaptor Nuts







PRODUCT  
CATALOGUE



Switchgear Machined Copper Components



Precision Machined Components







ENT  
and Components  
9822082482  
Sarkis Dineo

Switchgear Machined Components



Shafts, Brass Pin & Tubes





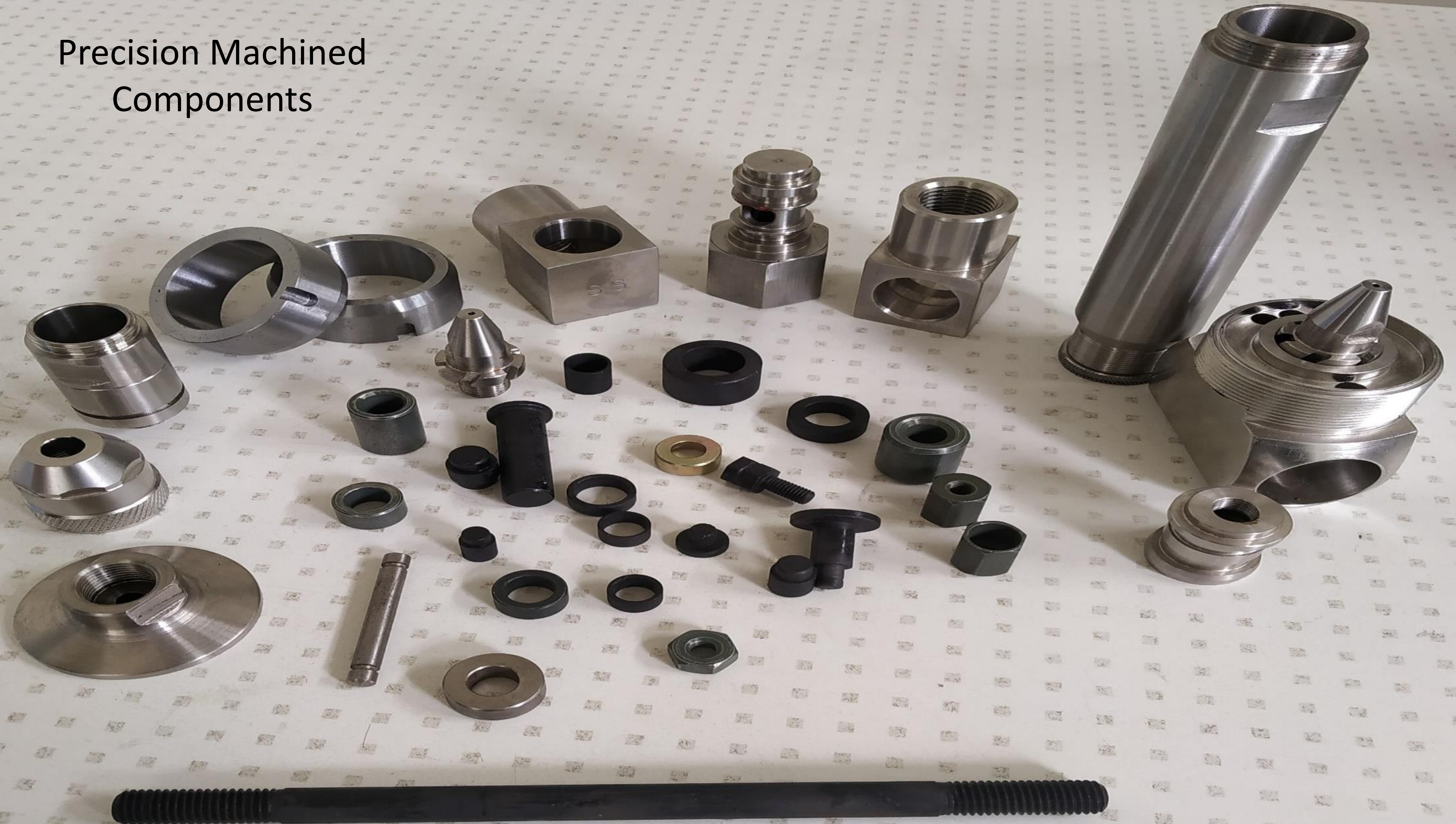


B. M.  
7-58807546  
937 100888  
SLIDE SCRAPING  
• Sunnyside, NY 10088  
• New York, NY 10014  
Steel, Brass, Inconel, Titanium, Hastelloy, Invar, 4220, 4340, A2, A4, 316, 304, 303, 302, 301, 300, 309, 310, 312, 314, 316L, 317, 318, 321, 321H, 321L, 321S, 321T, 321X2, 321X3, 321X4, 321X5, 321X6, 321X7, 321X8, 321X9, 321X10, 321X11, 321X12, 321X13, 321X14, 321X15, 321X16, 321X17, 321X18, 321X19, 321X20, 321X21, 321X22, 321X23, 321X24, 321X25, 321X26, 321X27, 321X28, 321X29, 321X30, 321X31, 321X32, 321X33, 321X34, 321X35, 321X36, 321X37, 321X38, 321X39, 321X40, 321X41, 321X42, 321X43, 321X44, 321X45, 321X46, 321X47, 321X48, 321X49, 321X50, 321X51, 321X52, 321X53, 321X54, 321X55, 321X56, 321X57, 321X58, 321X59, 321X60, 321X61, 321X62, 321X63, 321X64, 321X65, 321X66, 321X67, 321X68, 321X69, 321X70, 321X71, 321X72, 321X73, 321X74, 321X75, 321X76, 321X77, 321X78, 321X79, 321X80, 321X81, 321X82, 321X83, 321X84, 321X85, 321X86, 321X87, 321X88, 321X89, 321X90, 321X91, 321X92, 321X93, 321X94, 321X95, 321X96, 321X97, 321X98, 321X99, 321X100

Precision Machined Components



# Precision Machined Components







Precision Machined Components





Nozzle



# Swivel Sets

Without Assembly

With Assembly



SS316



Brass



PVC







Stainless Steel Connectors



Guiding Bush



T-Connectors





Flange



Connector Assembly



Bush





Shaft



Nozzle tip



Guiding Bush





Adaptors



**OUR CUSTOMERS**





# OUR CUSTOMERS



Bumper India Private Limited



OKAY Tools Pvt Ltd





## ACHIEVEMENTS

We had been awarded at Lucy Electric Supplier Meet 2018 and also by Metaforge Engineering Pvt Ltd. for providing best quality at the given time.



# MANUFACTURING INFRASTRUCTURE

Excellent production facilities supported by skilled & efficient hands to deliver Quality & Delivery schedule laid down by customer.

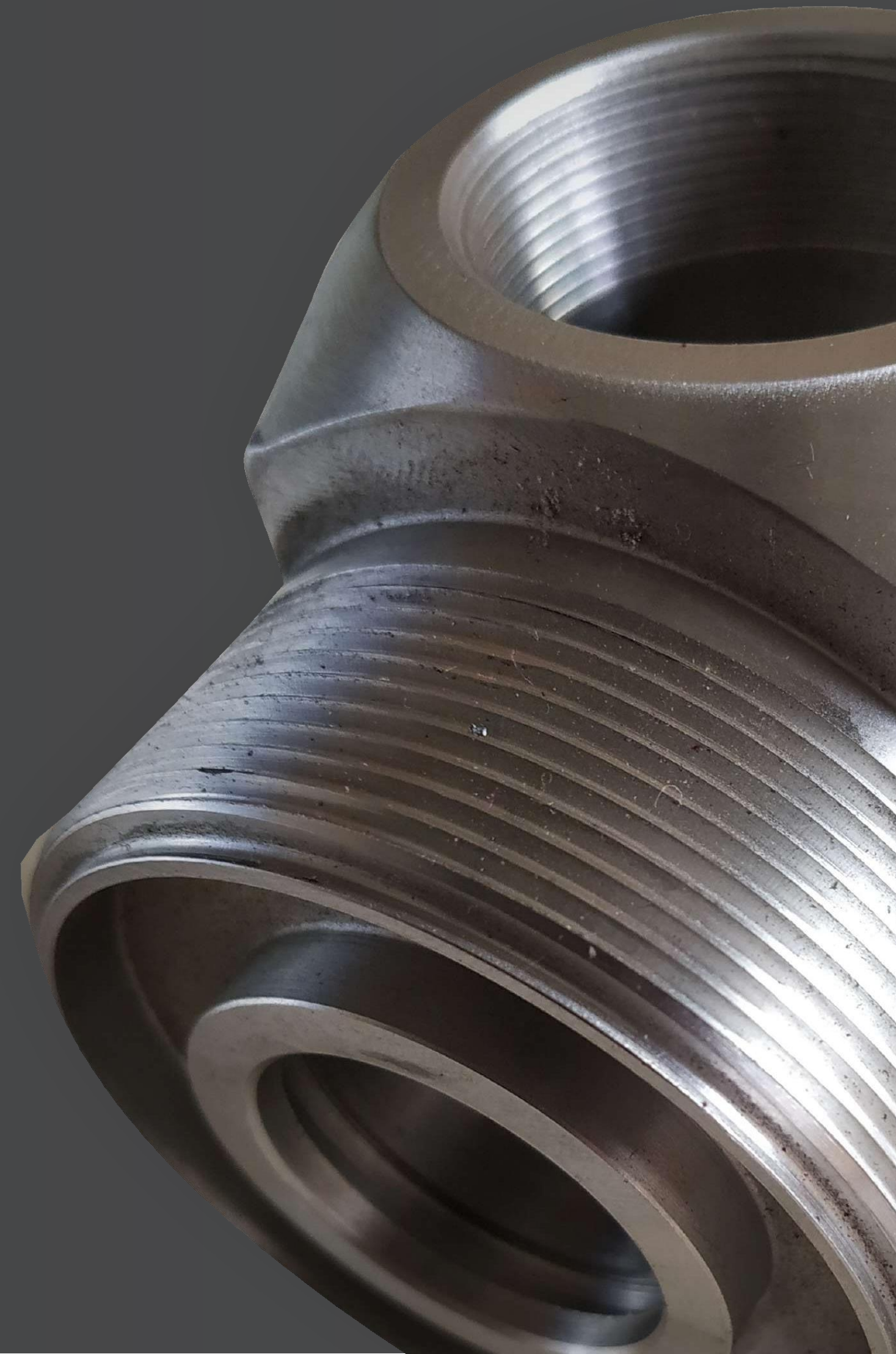
Quality Assurance Dept. with a Standard Room.

Export to UK, Denmark, Germany, UAE, SriLanka through our regular customers & real-time supplies to ISO 9001 certified customers.

Our products go through a variety of heat treatment & surface treatment processes.

We also export to Germany to our various customers.

Presently we handle batch size as small as 50 Nos to mass volume production according to business potential.





# VMC MACHINES





# VMC Machines





# CNC MACHINES





# DRO AND TRAUBS MACHINES





## Lathe and Band-Saw Cutting Machine Setup





## Manufacturing Infrastructure





## Manufacturing Infrastructure





# Manufacturing Infrastructure





## Manufacturing Infrastructure









## Manufacturing Infrastructure





## MACHINES INFRASTRUCTURE

Sr. No.	Machine	Make/Model	Capacity	Qty. ( Nos.)
1.	CNC Lathe	ACE	D 200mm	2
2.	CNC Lathe	LMW	D165mm	1
3.	CNC Lathe	Mac Power	D165 mm	1
4.	VMC M/c with 4 <sup>th</sup> axis	Cosmos	800 x 450 mm	4
5.	VMC M/c	AMS	500 x 300 mm	1
6.	Lathe M/c	Crawn	6.5ft	2
7.	Lathe M/c	Kirloskar	5.5ft	1
8.	DRO Milling	Pac mill	1250 x 350	2
9.	Conventional Milling	Atlas	750 x 250	1
10.	Traub m/c A 60	PMT	60mm	1



MANUFACTURING INFRASTRUCTURE

Sr. No.	Machine	Make/Model	Capacity	Qty. ( Nos.)
11.	Traub m/c A 42	PMT	42 mm	1
12.	Traub m/c A 32	Abhijit	32 mm	4
13	Traub m/c A 25	Arrow	25 mm	2
14.	Tapping m/c	Jyoti	3/8"	1
15.	Band Hacksaw	Jyoti	8"	2
16.	Band Saw Cutting Machine	Swastik	200 mm	1
17.	Orgun Welding Machine	Rilon	-	1
18.	Pipe Cutter	Dewalt	-	2



# QUALITY SET UP

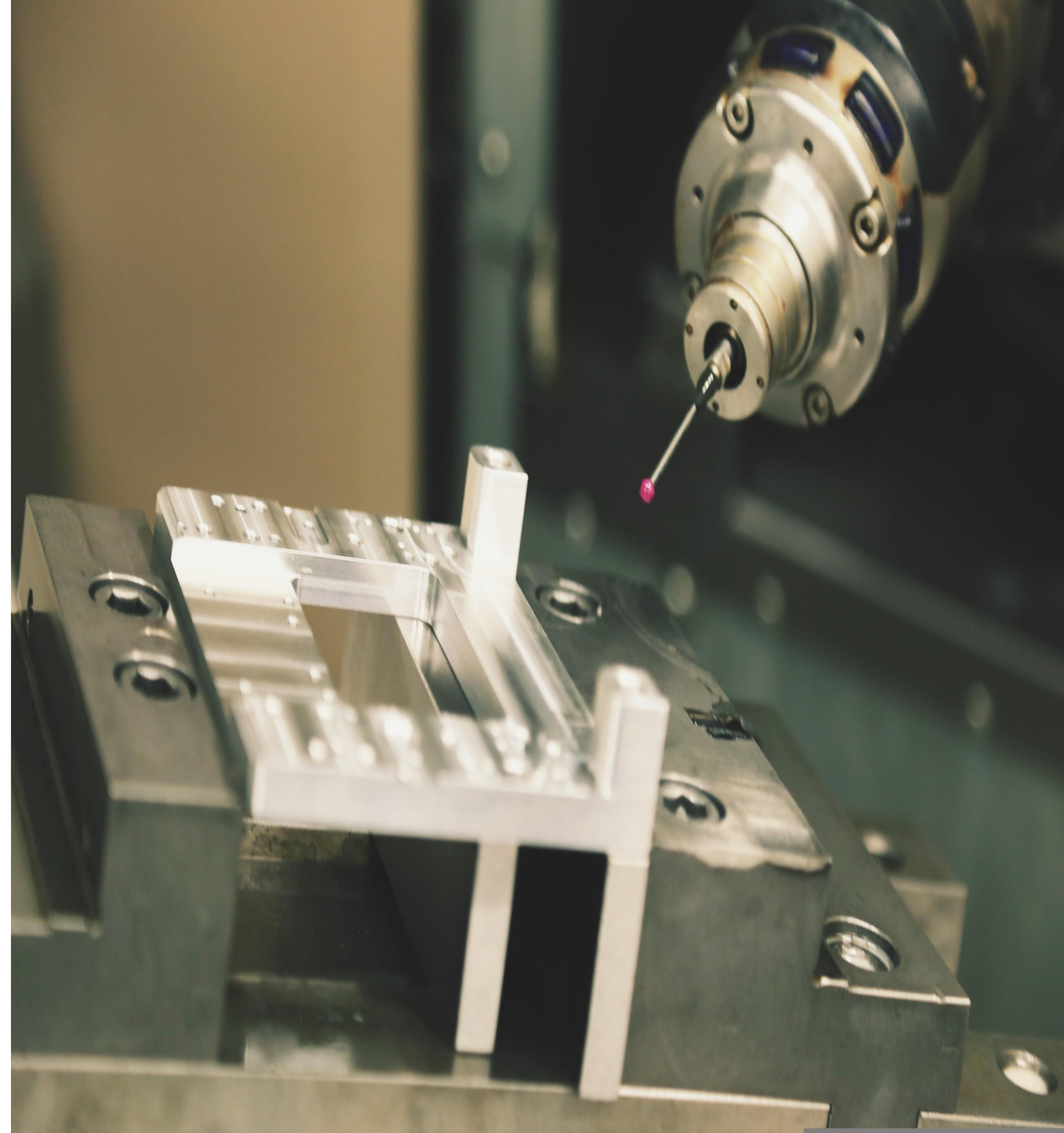
As an ISO 9001-2015 certified company quality has been integrated into the entire Manufacturing systems.

Quality plans for receiving / final Inspection & process control plans for every component have been the basis of the production process.

SPC techniques have been incorporated to monitor production and for some critical components a minimum acceptance criteria is of Cpk 1.67.

*Codes and standards followed in manufacturing and Quality*

<i>DIN 1651</i>	<i>BS 970-1</i>
<i>DIN 10088</i>	<i>IS 1367</i>
<i>IS 4170</i>	<i>DIN 71 802</i>
<i>IS 2500</i>	<i>ISO 2768</i>
<i>IS 1875</i>	<i>IS 2062</i>





QUALITY SET UP

Sr. No.	Model	Make	Capacity	Qty. ( Nos.)
1.	Digital Vernier	Mitutoyo, Japan	0 –150 mm	2
2.	Digital Vernier	Mitutoyo, Japan	0 –200 mm	1
3.	Dial Vernier	Mitutoyo, Japan	0–300 mm	1
4.	Digital Micrometer	Mitutoyo, Japan	0 –25mm	1
5.	Dial Vernier Caliper	Mitutoyo, Japan	0–150 mm	2
6.	Dial Vernier Caliper	Mitutoyo, Japan	0–200mm	1
7.	ID Micrometer	Aerospace	0 –25 mm	1



QUALITY SET UP

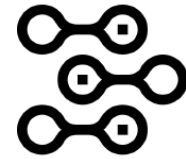
Sr. No.	Model	Make	Capacity	Qty. ( Nos.)
8.	Groove Micrometer	Aerospace	0-25 mm	1
9.	Surface Plate	Jash	300*300	1
10.	Magnetic V blocks	Crystal	6"	2
11.	Micrometer	Mitutoyo, Japan	0-25mm	4
12.	Micrometer	Aerospace	25-50mm	1
13.	Height Gauge		0-300mm	1



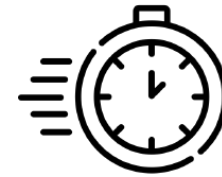
# WHY ASCENT TECHNOCRATS?



Flexibility: Multiple  
Delivery Options



High Technology  
Standards



Speed of  
Service



Cost Effective Quality  
Manufacturing



Efficient Business  
Execution



Long Term  
Commitment

## Customer Feedback

"Partnering with ASCENT TECHNOCRATS has been a game-changer for our business. Their commitment to precision and quality is unmatched, and their ability to handle complex projects with ease has significantly improved our production efficiency. The team's expertise, state-of-the-art technology, and outstanding customer service make ASCENT TECHNOCRATS a trusted and invaluable partner. We couldn't be more satisfied with the results and look forward to continued collaboration."

– A Satisfied Customer





*Director :*  
*Sarika Divate*

*Contact details :*  
*+91 9373673870*

*Website :* [www.ascenttechnocrats.com](http://www.ascenttechnocrats.com)

Email ID :  
[ascenttechnocratsnsk@gmail.com](mailto:ascenttechnocratsnsk@gmail.com)

[akash.divate@ascenttechnocrats.com](mailto:akash.divate@ascenttechnocrats.com)

***// THANKYOU //***